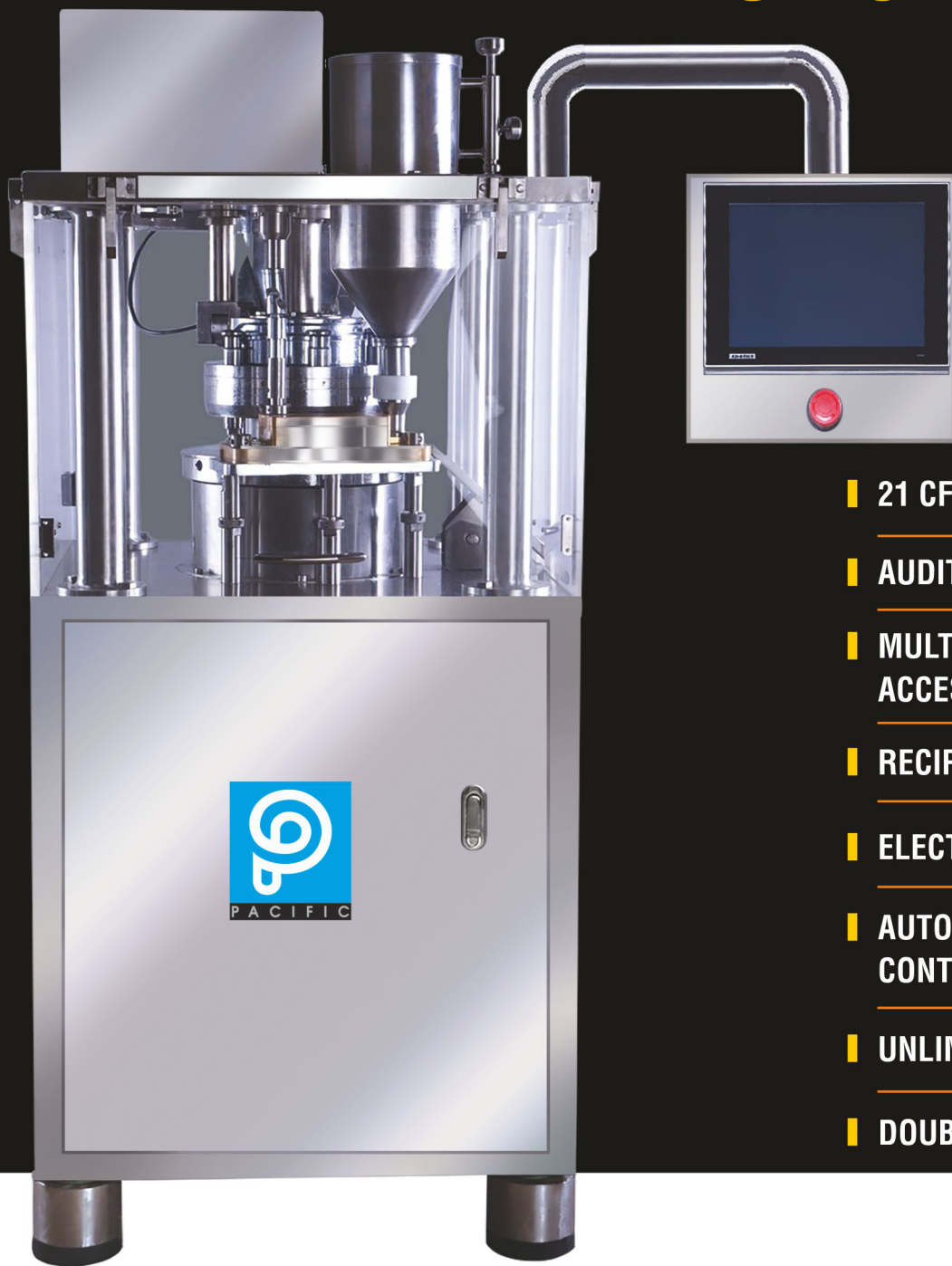


SMARTPRESS

SRC 10i -DL



- 21 CFR PART 11 COMPLIANCE
- AUDIT TRAIL
- MULTI LEVEL USER ACCESS CONTROL
- RECIPE MANAGEMENT
- ELECTRONIC SIGNATURE
- AUTOMATIC WEIGHT CONTROL OPTION
- UNLIMITED DATA STORAGE
- DOUBLE LAYER



*Fully instrumented tablet press
for formulation research & development*

Turning Technology..... into Action®



An ISO 9001:2008 Company

SMARTPRESS

SRC 10i - DL is a centre driven tablet press most suitable for research & development having the following special features.

- ▶ cGMP conformation
- ▶ Scalability for production batches
- ▶ capability to compress difficult formulations
- ▶ User friendly
- ▶ Fully Instrumented
- ▶ Multi tooling option in single turret (D/B/BB/BBS)
- ▶ Double layer option



cGMP conformation

The turret of SRC 10i is driven from the centre. The drive zone is totally isolated from product zone. The turret can be approached from all the 360° for cleaning and operation. The machine is fully covered by SS 304 doors. All parts are made of SS 304 or clad with SS 304. All contact parts are made of SS 316.

SCALABILITY FOR PRODUCTION

SMART PRESS SRC 10i works under production - like conditions and all production related data like turret rpm, pre & main compression force, ejection force, dwell time and fill depth are registered. The basic machine structure and gear box size are designed for 10 tonnes compression force and hence it has production like capabilities.

USER FRIENDLY & SAFETY

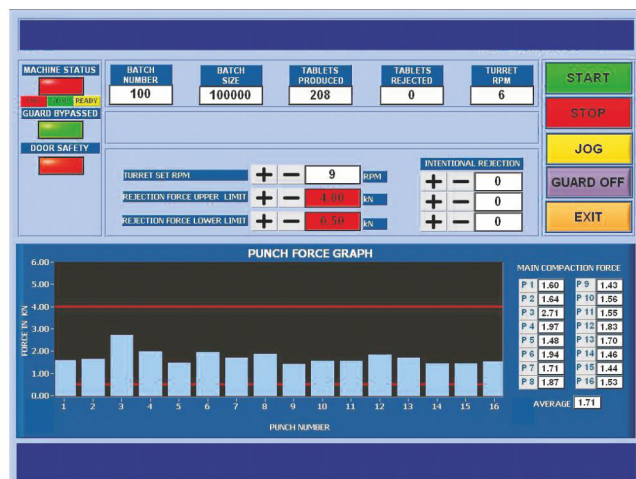
SRC 10i is operator friendly machine and has convenient height of loading & unloading of tooling, height of powder charging & tablet discharge. Machine is driven by a suitable gearbox through an electromagnetic clutch. Safety of operator/ product/ tooling & machine are well protected. Outside control/ motorized control is provided for adjusting tablet weight, pre & main compression thickness.



FULLY INSTRUMENTED

The main motor and force feed motor are controlled by variable frequency drive with synchronization option. The pre compression force, main compression force and ejection force of individual punches are measured continuously using load cells and are recorded in the computer. The graphical analysis, statistical analysis, force analysis and histogram are made available and all data can be recorded.

The control panel is completely separate from the machine and all hardwares are of reputed makes.



Recipe Code: 3 Product Name: Test

TABLET PARAMETER		MACHINE PARAMETER	
Shape	Round	Turret RPM	30
Size	12 mm	Max Operating Pressure (g)	3.0
Thickness (mm)	2.50	Depth of Die Fill (mm)	5.00
Hardness (kg)	3.50	Tablet Thickness (mm)	2.80
Weight (mg)	50	Upper Punch Entry (mm)	1.0

Rejection Force Upper Limit (kN): 2.50 Rejection Force Lower Limit (kN): 0.00

Recipe management Screen SAVE CANCEL

~ 1 2 3 4 5 6 7 8 9 0 - = Back 50

Tab q w e r t y u i o p [] \ Clear

Shift a s d f g h j k l ; ' Enter OK

Space z x c v b n m , . / Delete Cancel

New Batch Date: 10-12-2006

Recipe Code: 2 Product Name: Test

Operator Code	001	Batch Size	100000
Batch No.	B1	Start Time	
Exp. Date	12-12-2007	Complete Time	

Tablet Parameters		Machine Parameters	
Shape	Round	Turret RPM	20
Size (mm)	12mm	Max Operating Pressure (g)	5.0
Thickness (mm)	3.00	Depth of Die Fill (mm)	8.00
Hardness (kg)	3.50	Tablet Thickness (mm)	3.00
Weight (mg)	50	Upper Punch Entry (mm)	8.0

Rejection Force Upper Limit (kN): 4.00 Rejection Force Lower Limit (kN): 3.00

SAVE CANCEL

SMARTPRESS

Technical Specifications :

MODEL NO.	SRC 10i (D)	SRC 10i - DL
No.of stations	10	10
Tooling	D	D/B with double layer
Turret speed(rpm)	10 to 25	10 to 25
Max tablet output	15000/hr	7500/hr
Max tablet size(mm)	25	25
Max. fill depth(mm)	20	20
Pre compression force (ton)	1	1
Max compression force (ton)	10	10
Main motor power	2 HP	2 HP
Force Feeder motor	0.25 HP	NA
Machine Dimension(mm)	650x750x1575 mm L W H	650x750x1575 mm L W H
Machine weight (kgs)	750	750

Specifications subject to change without notice



PACIFIC TOOLS PVT. LTD.

Unit – 1 : Rajprabha Land Mark Industrial Estate, Building No.1 B, Bhoidapada, Sativali Road,
Gokhivare, Vasai East, Dist. Palghar, Mumbai 401208. India. Phone : +91-250-2451990/91/92/93

Unit – 2 : Plot No. G 66E, SIDCO Industrial Estate, Kakkalur, Thiruvallur District, Tamil Nadu, India - 602 003.
Phone : 044 - 27660534 / 27660535

Email : info@pacifictools.in **Website :** www.pacifictools.in

Marketing Offices : Bangalore, Hyderabad, Ahmedabad, New Delhi, Pune, Himachal Pradesh